

# **LEE** ENGINEERING

Product Catalog

## CONNECTORS

**Aluminum Lattice Connector**

Accepts 1/2" Rod | 1/4" Set Screw  
Product number: L2A-1  
(12 Connectors) Product number: L1A-3

**Quick Action Aluminum Connector**

Aluminum connector with Tee handles  
Accepts 1/2" Rod  
Product number: L4A-1

**Tee Handle Assembly**

Exclusive Stainless Steel Tee Handle for  
Quick Adjustments  
Product number: L5A-1

**Closed 3/4" Aluminum Connector**

Closed Connector for 3/4" (19.05 mm) Rods  
3/8" Set Screw for adjustment  
Product number: L34A-C

**Open Stainless Steel Connector**

S type connector for 1/2" Rod  
1/4" Set Screw  
Product number: SL2A-1

**Closed Stainless Steel Connector**

Closed connector for 1/2" Rod  
1/4" Set Screw  
Product number: SL2A-1C

**Open Plastic Connector**

Open type Nylon hex bolt connector  
for 1/2" Rod  
Product number: PL2A-1

**Closed Plastic Connector**

Closed type, Nylon hex bolt connector  
for 1/2" Rod  
Product number: PL2A-1C

## BASES

**Zinc Vertical Base Plate**

Lab frame foot for 1/2" Rods | 1/4" Set Screw  
#10 Mounting Screws Not Included  
Product number: L8A-1

**Zinc Swivel Base Plate**

Allows 1/2" Rods angling of 45° | 1/4" Set Screw  
#10 Mounting Screws Not Included  
Product number: L10A-1

**3/4" Recessed Flat Top Rod Socket**

Aluminum Rod Socket with Tapered Bore  
Socket & Nut for 3/4" Tapered Rod or Adapter  
Product number: L34C-1A

**Tapered Adapter for 3/4" Rod Socket**

3/4" Aluminum Tapered Adapter for Rod  
Socket. Fits 1/2" Threaded Rod.  
Product number: L34C-2A

**Stainless Steel Vertical Base Plate**

Lab frame foot for 1/2" Rods | 1/4" Set Screw  
#10 Mounting Screws Not Included  
Product number: SL8A-1

**Stainless Steel Swivel Base Plate**

Allows 1/2" Rods angling of 45° | 1/4" Set Screw  
#10 Mounting Screws Not Included  
Product number: SL10A-1

**Plastic Vertical Base Plate**

Accepts 1/2" Rod | 1/4" Set Screw  
#10 Mounting Screws Not Included  
Product number: PL8A-1

**1/2" Recessed Flat Top Rod Socket**

Aluminum Recessed Table Mount Rod  
Socket with Nut for 1/2" Tapered Rod  
Product number: L12C-1

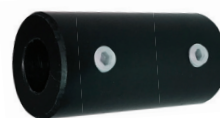
## COMPONENTS

**Aluminum Rod Coupler**

Rod extender for 1/2" Rods  
Includes Aluminum Set Screws  
Product number: RC50020-AL

**Stainless Steel Rod Coupler**

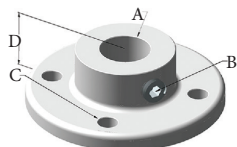
Rod extender for 1/2" Rods  
Includes Stainless Steel Set Screws  
Product number: RC50020-SS

**Plastic Rod Coupler**

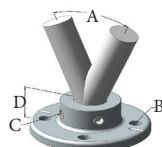
Rod extender for 1/2" Rods  
1/4" Plastic Set Screws  
Product number: RC50020-PL

**Allen Wrench Hex Key**

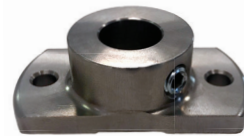
1/8" (3.175mm) Wrench Key  
Fits 1/4" Set Screws  
Product number: 81V

**Vertical Base Plate**

A: Allows 1/2" Rods  
B: Locks in place with a 1/4" set screw  
C: Four .201 holes  
D: .625" high

**Swivel Base Plate**

A: Allows 1/2" Rods angling of 45°  
B: Four .201 holes  
C: Locks in place with 2 set screws  
D: .625" high

**Stainless Steel 1/2" Fitting**

Allows 1/2" Rods  
1 inch Narrow Width  
Product number: SL8A-1AMS

**Aluminum 1/2" Fitting**

Allows 1/2" Rods  
1 inch Narrow Width  
Product number: L8A-1AMS

\*Part Drawings Available Upon Request

# ALUMINUM

## Aluminum Lab Frame Rod - Custom Lengths Available

Product #	Description	Length
L12R-4A	Aluminum lattice rod, 1/2" x 4" long	4"
L12R-6A	Aluminum lattice rod, 1/2" x 6" long	6"
L12R-12A	Aluminum lattice rod, 1/2" x 12" long	12"
L12R-18A	Aluminum lattice rod, 1/2" x 18" long	18"
L12R-24A	Aluminum lattice rod, 1/2" x 24" long	24"
L12R-36A	Aluminum lattice rod, 1/2" x 36" long	36"
L12R-48A	Aluminum lattice rod, 1/2" x 48" long	48"
L12R-60A	Aluminum lattice rod, 1/2" x 60" long	60"
L12R-72A	Aluminum lattice rod, 1/2" x 72" long	72"
L12R-84A	Aluminum lattice rod, 1/2" x 84" long	84"
L12R-96A	Aluminum lattice rod, 1/2" x 96" long	96"

\*Aluminum 1/4" diameter Rods available on website.

\*\*Tapered Rods and Threaded Rods are available upon request only.



# STAINLESS STEEL

## Stainless Steel Lab Frame Rod - Custom Lengths Available

Product #	Description	Length
L12R-4S	Stainless Steel lattice rod, 1/2" x 4" long	4"
L12R-6S	Stainless Steel lattice rod, 1/2" x 6" long	6"
L12R-12S	Stainless Steel lattice rod, 1/2" x 12" long	12"
L12R-18S	Stainless Steel lattice rod, 1/2" x 18" long	18"
L12R-24S	Stainless Steel lattice rod, 1/2" x 24" long	24"
L12R-36S	Stainless Steel lattice rod, 1/2" x 36" long	36"
L12R-48S	Stainless Steel lattice rod, 1/2" x 48" long	48"
L12R-60S	Stainless Steel lattice rod, 1/2" x 60" long	60"
L12R-72S	Stainless Steel lattice rod, 1/2" x 72" long	72"
L12R-84S	Stainless Steel lattice rod, 1/2" x 84" long	84"
L12R-96S	Stainless Steel lattice rod, 1/2" x 96" long	96"

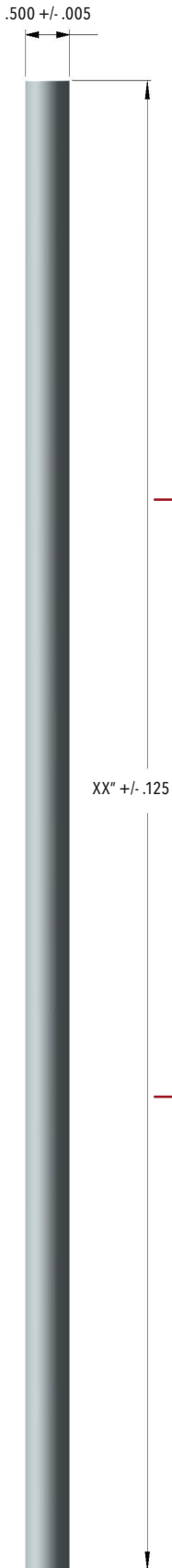
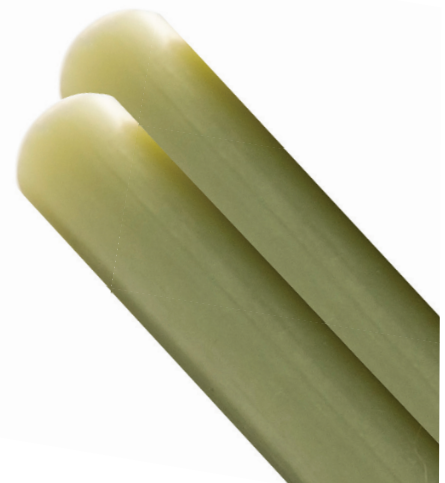


# FIBERGLASS

## Fiberglass Lab Frame Rod - Custom Lengths Available

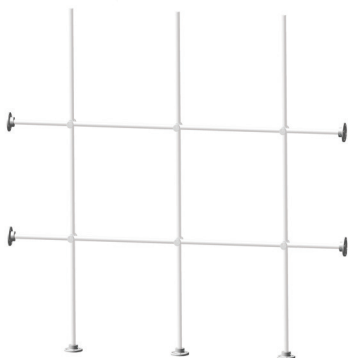
Product #	Description	Length
L12R-4F	Fiberglass lattice rod, 1/2" x 4" long	4"
L12R-6F	Fiberglass lattice rod, 1/2" x 6" long	6"
L12R-12F	Fiberglass lattice rod, 1/2" x 12" long	12"
L12R-18F	Fiberglass lattice rod, 1/2" x 18" long	18"
L12R-24F	Fiberglass lattice rod, 1/2" x 24" long	24"
L12R-36F	Fiberglass lattice rod, 1/2" x 36" long	36"
L12R-48F	Fiberglass lattice rod, 1/2" x 48" long	48"
L12R-60F	Fiberglass lattice rod, 1/2" x 60" long	60"
L12R-72F	Fiberglass lattice rod, 1/2" x 72" long	72"
L12R-84F	Fiberglass lattice rod, 1/2" x 84" long	84"
L12R-96F	Fiberglass lattice rod, 1/2" x 96" long	96"

\*Check website for latest products



## SIDE & BOTTOM LAB-FRAME MOUNTING KIT

Side & Bottom Lab-Frame Mounting Kit for Fume Hoods - Custom Kits Available. All kits are based on 12" x 12" grid spacing.



\*Grayed Out Items are for Reference Only

### 4 Foot Side & Bottom Mounting Kit

For a Standard 4' Lab-Frame  
Contents: (7) Vertical Base Plates.

### 6 Foot Side & Bottom Mounting Kit

For a Standard 6' Lab-Frame  
Contents: (9) Vertical Base Plates.

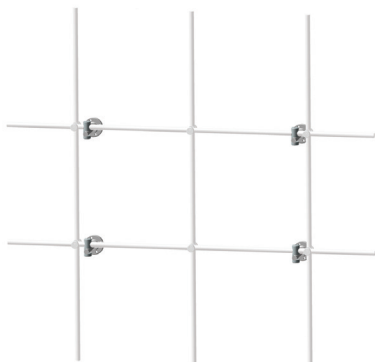
### 8 Foot Side & Bottom Mounting Kit

For a Standard 8' Lab-Frame  
Contents: (11) Vertical Base Plates.

Material	Part #	Size	Part #	Size	Part #	Size
Aluminum	SMK8-1A	4'	SMK8-6A	6'	SMK8-8A	8'
Stainless Steel	SMK8-1S	4'	SMK8-6S	6'	SMK8-8S	8'
Fiberglass	SMK8-1F	4'	SMK8-6F	6'	SMK8-8F	8'

## BACK MOUNT LAB-FRAME MOUNTING KIT

Back Mount Lab-Frame Mounting Kit for Fume Hoods - Custom Kits Available. All kits are based on 12" x 12" grid spacing.



\*Grayed Out Items are for Reference Only

### 4 Foot Back Mount Mounting Kit

For a Standard 4' Lab-Frame  
Contents: (4) 4" Rods, (4) Connectors & (4) Base plates.

### 6 Foot Back Mount Mounting Kit

For a Standard 6' Lab-Frame  
Contents: (6) 4" Rods, (6) Connectors & (6) Base plates.

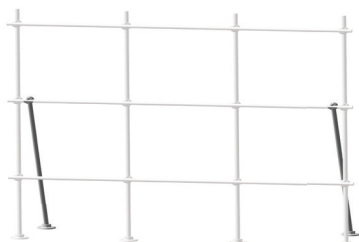
### 8 Foot Back Mount Mounting Kit

For a Standard 8' Lab-Frame  
Contents: (8) 4" Rods, (8) Connectors & (8) Base plates.

Material	Part #	Size	Part #	Size	Part #	Size
Aluminum	BMK12-1A	4'	BMK12-6A	6'	BMK12-8A	8'
Stainless Steel	BMK12-1S	4'	BMK12-6S	6'	BMK12-8S	8'
Fiberglass	BMK12-1F	4'	BMK12-6F	6'	BMK12-8F	8'

## TABLE TOP LAB-FRAME MOUNTING KIT

Stainless Steel & Aluminum Table Top Lab-Frame Mounting Kit - Custom Sizes Available. All kits are based on 12" x 12" grid spacing.



Aluminum & Stainless Steel Table Top Mounting Kit  
\*Grayed Out Items are for Reference Only

### 4 Foot Table Top Mounting Kit

For a Standard 4' Lab-Frame  
Contents: (2) 24" Rods, (2) Connectors, (2) Base Plates & (2) Swivel Plates.

### 6 Foot Table Top Mounting Kit

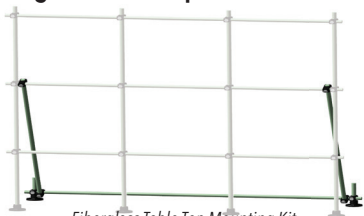
For a Standard 6' Lab-Frame  
Contents: (3) 24" Rods, (3) Connectors, (3) Base Plates & (3) Swivel Plates.

### 8 Foot Table Top Mounting Kit

For a Standard 8' Lab-Frame  
Contents: (4) 24" Rods, (4) Connectors, (4) Base Plates & (4) Swivel Plates.

Material	Part #	Size	Part #	Size	Part #	Size
Aluminum	TMK8-1A	4'	TMK8-6A	6'	TMK8-8A	8'
Stainless Steel	TMK8-1S	4'	TMK8-6S	6'	TMK8-8S	8'

Fiberglass Table Top Lab-Frame Mounting Kit - Custom Sizes Available. All kits are based on 12" x 12" grid spacing.



Fiberglass Table Top Mounting Kit  
\*Grayed Out Items are for Reference Only

### 4 Foot Table Top Mounting Kit

For a Standard 4' Lab-Frame  
Contents: (1) 38" Rods, (2) 24" Rods, (2) 4" Rods, (6) Connectors & (2) Base Plates.

### 6 Foot Table Top Mounting Kit

For a Standard 6' Lab-Frame  
Contents: (1) 62" Rods, (4) 24" Rods, (4) 4" Rods, (12) Connectors & (4) Base Plates.

### 8 Foot Table Top Mounting Kit

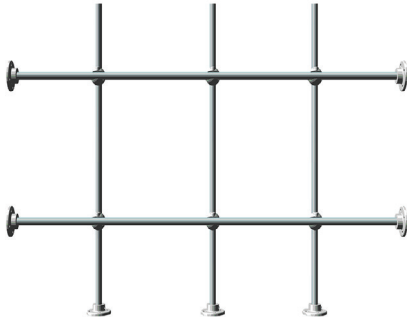
For a Standard 8' Lab-Frame  
Contents: (1) 86" Rods, (5) 24" Rods, (5) 4" Rods, (15) Connectors & (5) Base Plates.

Material	Part #	Size	Part #	Size	Part #	Size
Fiberglass	TMK8-1F	4'	TMK8-6F	6'	TMK8-8F	8'

# SIDE & BOTTOM LAB-FRAME KIT

**Side & Bottom Lab-Frame Kit for Fume Hoods** - Custom Sizes Available. All kits are based on 12" x 12" grid spacing.

This mounting option is recommended for situations when you need a lab support lattice to cover the entire back panel of your fume hood. The horizontal rods of this Lab-Frame should measure 1/4" less than the interior width of your hood. **Mounting Screws Not Included.**



### 4 Foot Side & Bottom Frame

Measurements: 36" x 38"  
 Contents: (3) 36" Rods, (2) 38" Rods,  
 (6) Connectors & (7) Base Plates.

### 6 Foot Side & Bottom Frame

Measurements: 36" x 62"  
 Contents: (5) 36" Rods, (2) 62" Rods,  
 (10) Connectors & (9) Base Plates.

### 8 Foot Side & Bottom Frame

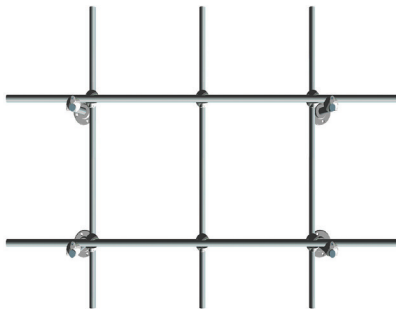
Measurements: 36" x 86"  
 Contents: (7) 36" Rods, (2) 86" Rods,  
 (14) Connectors & (11) Base Plates.

Material	Part #	Size	Part #	Size	Part #	Size
Aluminum	STBM-4A	4'	STBM-6A	6'	STBM-7A	8'
Stainless Steel	STBM-4S	4'	STBM-6S	6'	STBM-7S	8'
Fiberglass	STBM-4F	4'	STBM-6F	6'	STBM-7F	8'

# BACK MOUNT LAB-FRAME KIT

**Back Mount Lab-Frame Kit for Fume Hoods** - Custom Sizes Available. All kits are based on 12" x 12" grid spacing.

This mounting option is recommended for situations when you need a lab support lattice to cover the back panel of your fume hood without touching the sides or bottom. **Mounting Screws Not Included.**



### 4 Foot Back Mount Frame

Measurements: 36" x 38" x 4"  
 Contents: (3) 36" Rods, (2) 38" Rods,  
 (4) 4" Rods, (10) Connectors &  
 (4) Base plates.

### 6 Foot Back Mount Frame

Measurements: 36" x 62" x 4"  
 Contents: (5) 36" Rods, (2) 62" Rods,  
 (6) 4" Rods, (16) Connectors &  
 (6) Base Plates.

### 8 Foot Back Mount Frame

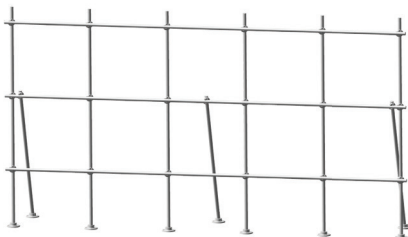
Measurements: 36" x 86" x 4"  
 Contents: (7) 36" Rods, (2) 86" Rods,  
 (8) 4" Rods, (22) Connectors &  
 (8) Base Plates.

Material	Part #	Size	Part #	Size	Part #	Size
Aluminum	BM-4A	4'	BM-6A	6'	BM-7A	8'
Stainless Steel	BM-4S	4'	BM-6S	6'	BM-7S	8'
Fiberglass	BM-4F	4'	BM-6F	6'	BM-7F	8'

# TABLE TOP LAB-FRAME KIT

**Stainless Steel & Aluminum Table Top Lab-Frame Kit** - Custom Sizes Available. All kits are based on 12" x 12" grid spacing.

This mounting option is recommended for situations when you need free-standing lattice. **Mounting Screws Not Included.**



Aluminum & Stainless Steel Table Top Lab-Frame Kit

### 4 Foot Table Top Frame

Measurements: 36" x 38" x 11"  
 Contents: (4) 36" Rods, (3) 38" Rods,  
 (2) 24" Rods, (14) Connectors, (4) Base  
 Plates & (2) Swivel Plates.

### 6 Foot Table Top Frame

Measurements: 36" x 62" x 11"  
 Contents: (6) 36" Rods, (3) 62" Rods,  
 (3) 24" Rods, (21) Connectors, (6) Base  
 Plates & (3) Swivel Plates.

### 8 Foot Table Top Frame

Measurements: 36" x 86" x 11"  
 Contents: (8) 36" Rods, (3) 86" Rods,  
 (4) 24" Rods, (28) Connectors, (8) Base  
 Plates & (4) Swivel Plates.

Material	Part #	Size	Part #	Size	Part #	Size
Aluminum	TTM-4A	4'	TTM-6A	6'	TTM-7A	8'
Stainless Steel	TTM-4S	4'	TTM-6S	6'	TTM-7S	8'

**Fiberglass Table Top Lab-Frame Kit** - Custom Sizes Available. All kits are based on 12" x 12" grid spacing.



Fiberglass Table Top Lab-Frame Kit

### 4 Foot Table Top Frame

Measurements: 36" x 38" x 11"  
 Contents: (4) 36" Rods, (4) 38" Rods,  
 (2) 24" Rods, (2) 4" Rods (18) Connectors  
 and (6) Base Plates.

### 6 Foot Table Top Frame

Measurements: 36" x 62" x 11"  
 Contents: (6) 36" Rods, (4) 62" Rods,  
 (4) 24" Rods, (4) 4" Rods (30) Connectors  
 and (10) Base Plates.

### 8 Foot Table Top Frame

Measurements: 36" x 86" x 11"  
 Contents: (8) 36" Rods, (4) 86" Rods,  
 (5) 24" Rods, (5) 4" Rods (39) Connectors  
 (14) Base Plates.

Material	Part #	Size	Part #	Size	Part #	Size
Fiberglass	TTM-4F	4'	TTM-6F	6'	TTM-7F	8'



GET EXACTLY WHAT YOU NEED.  
ANY ROD CAN BE **CUSTOM-CUT.**

**STAINLESS STEEL · ALUMINUM · FIBERGLASS**  
**YOUR SPEC · DEBURRED ENDS**

## Glossary

### **Rod Socket**

Rod Sockets fit tightly into countertops, tables or desks. They hold rods upright to display, support and stabilize your mounts.

### **Connectors**

Connectors allow the lab frame to be customized in just about any configuration you need.

### **Open Type Connector**

The open throat ball and S-type connectors allow easy shifting and removal of rods, reducing setup time. The smooth, rounded surface makes the lattice connector compact and easy-to-clean.

### **Closed Type Connector**

Closed connectors provide connection of substantial rods and rod-mounted equipment. The tapered inlet ensures smooth, accurate rod alignment.

### **Coupler**

Couplers are used to extend lattice rods. Tapered inlets ensure smooth, accurate rod alignment.

### **Lab Frame Rods**

Rods are the skeletons of your lab lattice, most often used as the base for suspending other components. Offered in various lengths and diameters, these versatile lab frame rods make setting up your lab simple.

### **Supports and bases**

Lab frame supports and bases give your lab frame a solid base to stand on. These can be free-standing with a fixed perpendicular base or secured to your lab bench with a locking single-plane base plate.

## About Us

For over 50 years, Lee Engineering has manufactured laboratory lattice components constructed for durability and versatility. We specialize in serving fume hood and casework manufacturers, schools, universities and commercial laboratories alike.

- Products are entirely made in the USA.
- Offer custom modifications to any of our parts.
- Onsite Engineer for specialized questions or needs.
- Kits can be packaged separately with installation instructions.
- Most products are available to ship same or next day.

Contact us today to discover the customer service, quality and value that back our lattice components.

*Bulk pricing and credit terms available.*

**Lee Engineering, LLC**

**1000 W Royal Lee Drive**

**Palmyra WI, 53156**

**1-844-781-5080**

**[www.engineeringbylee.com](http://www.engineeringbylee.com)**

Founded in 1926 by inventor and nutritionist Dr. Royal Lee, Lee Engineering designs and manufactures laboratory lattice systems, motorized household appliances and momentary foot switches.

Our lattice systems were originally designed to support nutritional research and have evolved to support a broad base of applications.

